



PlayStation

TM

NTSC U/C

PlayStation™

KIDS TO ADULTS

TM



CONTENT RATED BY
ESRB

SLUS-00579
50007

Prinkie



Prinkie™

JALECO™



HANDLING YOUR PLAYSTATION DISC:

- *The PlayStation disc is intended for use exclusively with the PlayStation™.*
- *Do not bend it, crush it, or submerge it in liquids.*
- *Do not leave it in direct sunlight or near a radiator or other source of heat.*
- *Be sure to take an occasional recess during extended play, to rest yourself and the PlayStation compact disc.*
- *Keep your PlayStation compact disc clean. Always hold the edges and keep it in its case when not in use. Clean with a lint-free, soft dry cloth-wiping in straight lines from center to edge. Never use solvents or abrasive cleaners.*

WARNING TO OWNERS OF PROJECTION TELEVISIONS:

STILL PICTURES OR IMAGES MAY CAUSE PERMANENT PICTURE-TUBE DAMAGE OR MARK THE PHOSPHOR OF THE CRT. AVOID REPEATED OR EXTENDED USE OF VIDEO GAMES ON LARGE-SCREEN PROJECTION TELEVISIONS.

WARNING: READ BEFORE USING YOUR PLAYSTATION GAME CONSOLE.

A very small percentage of individuals may experience epileptic seizures when exposed to certain light patterns or flashing lights. Exposure to certain patterns or backgrounds on a television screen or while playing video games may induce an epileptic seizure in these individuals. Certain conditions may induce previously undetected epileptic symptoms even in persons who have no history of prior seizures or epilepsy. If you, or anyone in your family, has an epileptic condition, consult your physician prior to playing. If you experience any of the following symptoms while playing a video game- dizziness, altered vision, eye or muscle twitches, loss of awareness, disorientation, any involuntary movement, or convulsions- IMMEDIATELY discontinue use and consult your physician before resuming play.

This product has been rated by the Entertainment Software Ratings Board. For information about the ESRB rating, or to comment about the appropriateness of the rating, please contact the ESRB at 1 (800) 771-3772.

WHAT'S INSIDE

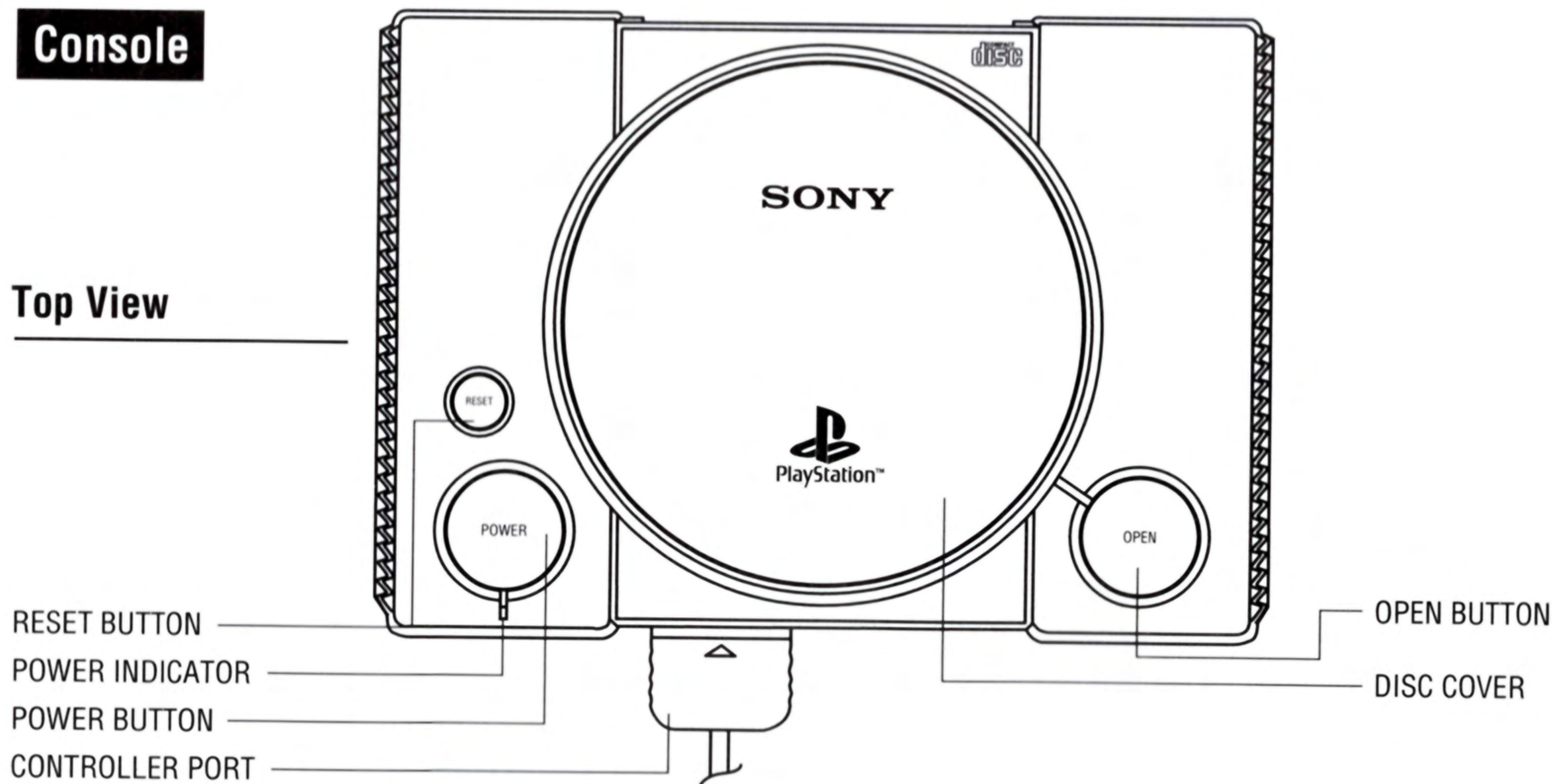
<i>Controller Functions</i>	2
<i>Title Screen Menu</i>	4
<i>Options</i>	4
<i>World and Island Maps</i>	4
<i>The Game Screen</i>	5
<i>Saving Your Game</i>	6
<i>Loading a Saved Game</i>	6
<i>Punky's Extreme Gear</i>	7
<i>Bonus Games</i>	10
<i>Tips</i>	10
<i>Credits</i>	11

SETTING UP YOUR GAME

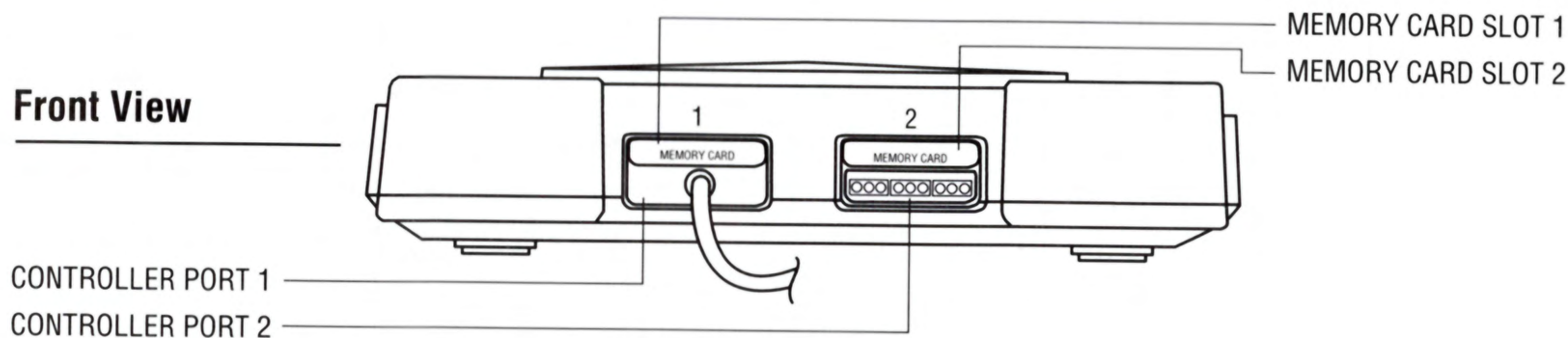
Set up your PlayStation™ game console according to the directions in its Instruction Manual. Make sure the power is off before inserting or removing a compact disc. Insert the Punky Skunk™ disc and close the disc cover. Insert game controllers and turn on the PlayStation game console. Follow the on-screen instructions to start a game.

Console

Top View

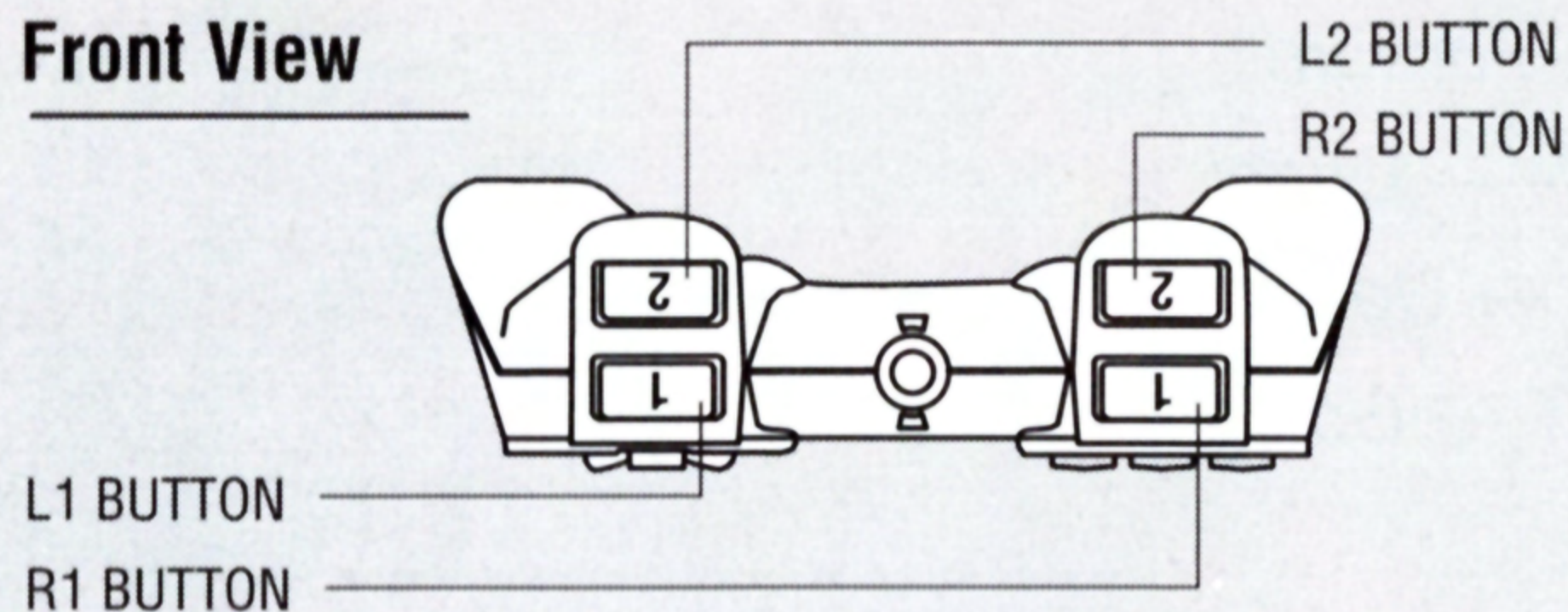


Front View

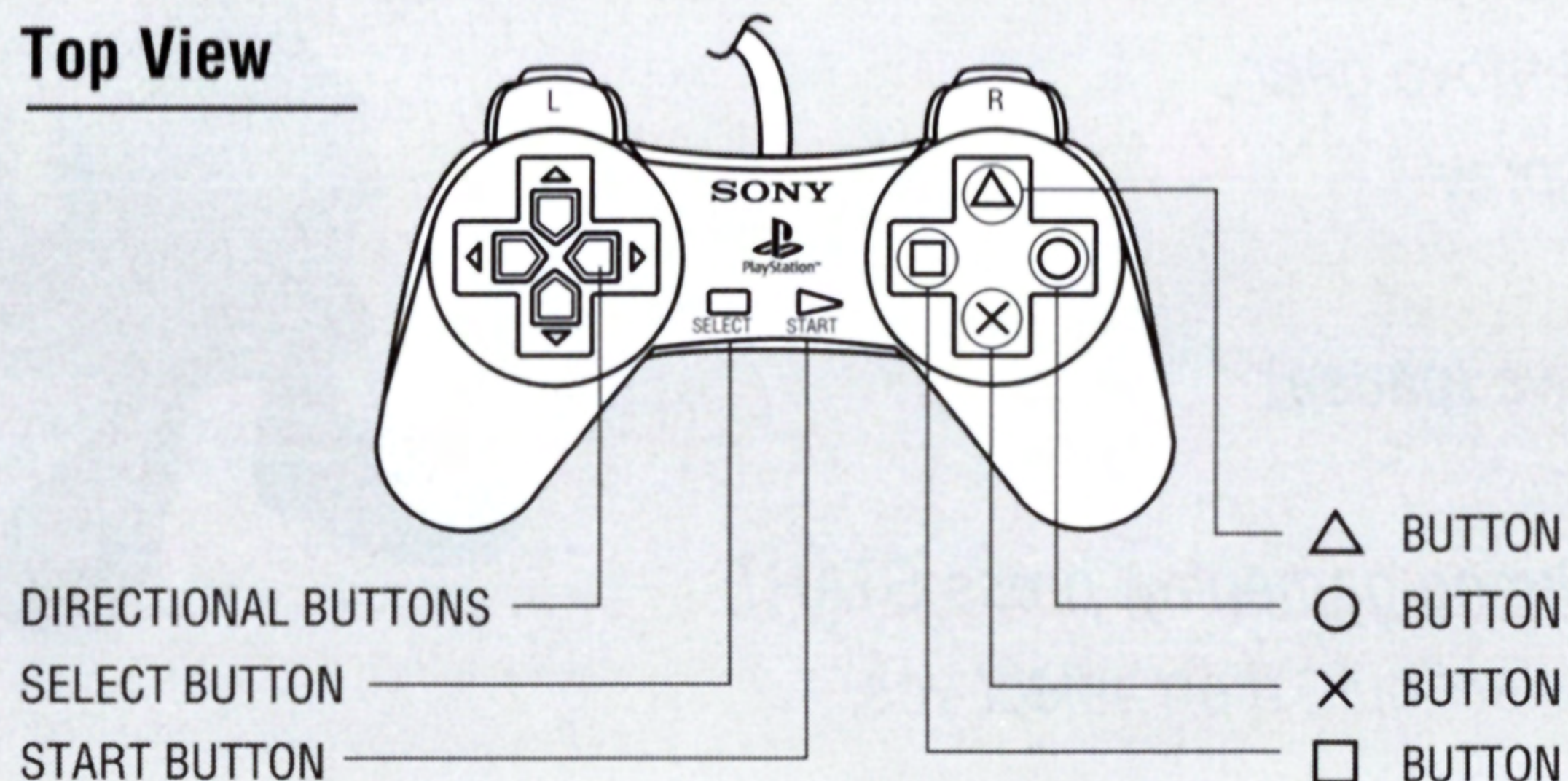


Controller

Front View



Top View



CONTROLLER FUNCTIONS

Here are the basic controls for each of the menus that appear in Punky Skunk.

DIRECTIONAL BUTTONS — *move through selections*

X — *decision/enter menu*

● or ▲ — *cancel decision/return to previous menu*

Controlling Punky Skunk

DIRECTIONAL UP — *Forward*

DIRECTIONAL DOWN — *Duck*

DIRECTIONAL LEFT — *Go left*

DIRECTIONAL RIGHT — *Go right*

X — *Jump*

● — *Equip/remove gear*

■ — *Attack/spray*

START — *Paws (pause)*

Soft Reset: *During gameplay, press START, select quit, then select yes.*



TITLE SCREEN MENU

To begin a new game, select Start.

To continue a saved game from a memory card, select Continue.

Choose Options to configure game settings.

OPTIONS

Select Options if you would like to reconfigure your controller settings, or to adjust the sound and music.

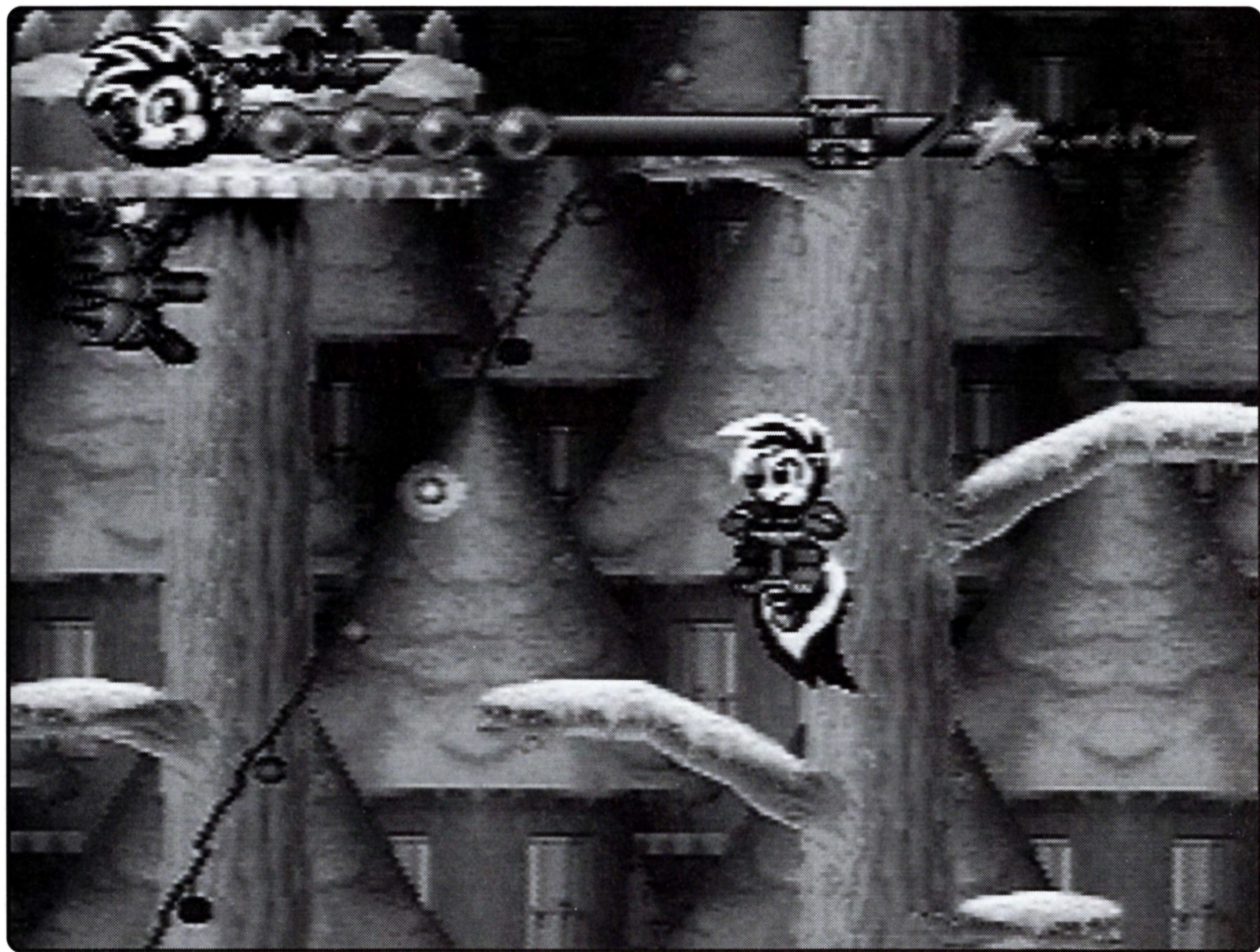
WORLD AND ISLAND MAPS

Complete a stage by locating BB's flagpole and attacking it!

To move to another stage, use the direction buttons as indicated by the flashing white hands. Press the **X** button to select a stage. A menu showing the name of the current stage will appear. Select "Let's go" to go to the stage.

At this point, you can also save your progress. Check out the section entitled, "Saving your game", for more information.

THE GAME SCREEN



SKUNK SPUNK

This tells you how many lives remain. On the screen in the upper left-hand corner.

GREEN ORBS

Everytime Punky takes a hit, he'll lose a green orb. If Punky loses all four orbs and takes one more hit, he loses one life.

GEAR

If you see a picture of Punky that means he's in normal (no gear equipped) mode. Otherwise, an icon showing the currently equipped item will be displayed.

STARS, STARS, STARS

You'll find them everywhere! Collect 100 of these and you'll get an extra skunk!

GAME OVER, MAN... GAME OVER!

Punky's adventure will end in one of two ways. The better ending is when Punky defeats Badler. The other is when you run out of lives.

SAVING YOUR GAME

You'll need a Memory card (sold seperately) to save your data. At the start of each new island or stage, you can save your progress. Make sure your Memory card is properly inserted into the PlayStation's Memory card slot 1. Select "Save" and follow the on-screen instructions.

LOADING A SAVED GAME

Make sure that the Memory card with your Punky Skunk data is properly inserted into the PlayStation's Memory card slot 1. At the title screen, select "Continue", then follow the on-screen commands.

PUNKY SKUNK'S EXTREME GEAR

Throughout some stages there will be gear icons. Punky's gonna need his badger-built gear to get through most of the stages. When his gear is equipped, Punky can't use his spray attack.

Punky can have only one item equipped at a time. If you have a Skysurfer and get the Inline Skates, from that point on Punky can only use his skates until another gear icon appears.

Make sure you want to change equipped items. Once Punky grabs a new item icon, he can't switch back. Punky can still equip and remove his gear. Just press the equip button.



Skysurfer

Punky's ultra-fast, but vulnerable when he's standing still on his Skysurfer. He doesn't have any way to attack, but at max speed he'll be invincible.



Paraglider

While in the air, press the jump button to open Punky's Paraglider chute. Attack by jumping on top of your enemy.

Inline Skates

The skates give Punky a speed advantage. Be careful, slowing down is tough. Press the down directional button and Punky will do a hockey stop. Attack enemies by jumping on them.





Diggers

They're pretty heavy so Punky won't be able to jump when he has them on. They'll take the fight out of any enemy. Find out how by pressing the attack button.

Pogo Stick

*Attack enemies by jumping on them.
Hold down the jump button for maximum airtime.*





Jetpack

Punky's special weapon against Badler and his gang. He'll get it only towards the end of the game.

BONUS GAMES

In between some of the stages, Punky has to play bonus games. Make sure you follow Kelly's on-screen advice.

TIPS

Chews love to disguise themselves and they'll have a variety of attacks.

Green Orbs can be found in the strangest places. Attack an enemy and he just might leave one behind.

If things get too fast when Punky uses his skysurfer, unequip the board and run through the level.

Punky is invincible when equipping or removing his gear. Changing will also give Punky an extra split second of hang time, if you need it.

Be careful. Yellow platforms will rise, green platforms will always fall.

Look out for 1up icons. Get one and you'll be rewarded with an extra life.

CREDITS

Visit Co., Ltd.

PresidentKaunobu Morimoto
Vice President.....Makoto Kato
Programmer.....Kenshi Naruse

Jaleco USA, Inc. Wheeling, IL

Vice President-Consumer DivisionGreg Hasler
Product Manager/English Script.....Jarik R. Sikat
Sales AdministrationShirley Vega
Japanese Language Translation.....Yukiko Tanaka
Package DesignMurrie Lienhart Rysner & Associates

This product has been rated by the Entertainment Software Ratings Board. For information about the ESRB rating, or to comment about the appropriateness of the rating, please contact the ESRB at 1 (800) 771-3772.

JALECO USA, INC. LIMITED WARRANTY

Jaleco USA, Inc. warrants to the original purchaser of this Jaleco software product that the medium on which this computer program is recorded is free from defects in materials and workmanship for a period of ninety (90) days from the date of purchase. This Jaleco software program is sold "as is" without express or implied warranty of any, and Jaleco is not liable for any losses or damages of any kind resulting from use of this program. Jaleco agrees for a period of ninety (90) days to either repair or replace, at its option, free of charge, any Jaleco software product, postage paid, with proof of date of purchase, at its Factory Service Center.

This warranty is not applicable to normal wear and tear. This warranty shall not be applicable and shall be void if the defect in the Jaleco software product has arisen through abuse, unreasonable use, mistreatment, or neglect. THIS WARRANTY IS IN LIEU OF ALL OTHER WARRANTIES AND NO OTHER REPRESENTATIONS OR CLAIMS OF ANY NATURE SHALL BE BINDING ON OR OBLIGATE JALECO. ANY IMPLIED WARRANTIES APPLICABLE TO THIS SOFTWARE PRODUCT, INCLUDING WARRANTIES OF MERCHANTABILITY AND FITNESS FOR PARTICULAR PURPOSE, ARE LIMITED TO THE NINETY (90) DAY PERIOD DESCRIBED ABOVE. IN NO EVENT WILL JALECO BE LIABLE FOR ANY SPECIAL, INCIDENTAL, OR CONSEQUENTIAL DAMAGES RESULTING FROM POSSESSION, USE, OR MALFUNCTION OF THIS JALECO SOFTWARE PRODUCT. Some states do not allow limitations as to how long an implied warranty lasts and/or exclusions or limitations of incidental or consequential damages so the above limitations and/or exclusions of liability may not apply to you. This warranty gives you specific rights, and you may also have other rights which vary from state to state.

Punky Skunk ©1998 Visit Co., Ltd

Jaleco and the Jaleco logo are trademarks of Jaleco Ltd.

Jaleco USA, Inc.

225 Larkin Dr.,

Unit 4

Wheeling, IL 60090

www.jaleco.com

www.jaleco.co.jp



Punky Skunk ©1998 Visit Co., Ltd.

Presented by JALECO USA. Jaleco and the Jaleco logo are trademarks of Jaleco Ltd.

Jaleco USA, Inc. 225 Larkin Dr. Unit 4, Wheeling, IL 60090

www.jaleco.com

Licensed by Sony Computer Entertainment America for use with the PlayStation game console. PlayStation and the PlayStation logos are trademarks of Sony Computer Entertainment Inc. The ratings icon is a registered trademark of the Interactive Digital Software Association. Manufactured and printed in the U.S.A. THIS SOFTWARE IS COMPATIBLE WITH PLAYSTATION GAME CONSOLES WITH THE NTSC U/C DESIGNATION. U.S. AND FOREIGN PATENTS PENDING.

